

Specifications

XQ-Series Automated Haematology Analyser XQ-320

ANALYSIS PRINCIPLE

WBC : DC detection method
RBC/PLT : DC detection method
HGB : Non-cyanide haemoglobin analysis method

PARAMETERS

Whole blood mode, Pre-diluted mode:
WBC, RBC, HGB, HCT, MCV, MCH, MCHC, PLT
LYM%, MXD%, NEUT%, LYM#, MXD#, NEUT#
RDW-SD, RDW-CV, PDW, MPV, PCT, P-LCR

SAMPLE VOLUME

WB mode Approx. 16 µL
PD mode Approx. 65 µL

QUALITY CONTROL MATERIAL

EIGHTCHECK-3WP (Low, Normal, High)

QUALITY CONTROL

99 files (300 plots/file)

THROUGHPUT

WB mode Approx. 70 samples per hour

CALIBRATOR MATERIAL

SCS-1000

DIMENSION (W X D X H)

Main Unit : 365 x 450 x 440 mm

WEIGHT

Approx. 22 kg

DATA STORAGE

Up to 500,000 with histogram

INTERFACE

10.4" colour LCD touch screen (user interface)
External printer (option)
Hand-held barcode reader
Serial port (for host computer/RS- C)
LAN x 2 (Caresphere XQC service)
USB x 5

Design and specifications may be subject to change due to further product development.

Small. Simple. Smart.



Sysmex Asia Pacific Pte Ltd
Tel +65 6221-3629 Fax +65 6221-3687
www.sysmex-ap.com

Sysmex India Pvt. Ltd
Tel +91 (22) 6112-6666
www.sysmex.co.in

PT Sysmex Indonesia
Tel +62 (21) 3002-6688 Fax +62 (21) 3002-6699
www.sysmex.co.id

Sysmex (Malaysia) Sdn Bhd
Tel +60 (3) 5637-1788 Fax +60 (3) 5637-1688
www.sysmex.com.my

Sysmex New Zealand Ltd
Tel +64 (9) 630-3554
www.sysmex.co.nz

Sysmex (Thailand) Co., Ltd
Tel +66 (2) 032-2536 Fax +66 (2) 116-5396
www.sysmex.co.th

Sysmex Philippines Inc.
Tel +63 (2) 621-2460 Fax +63 (2) 621-2432
www.sysmex.com.ph

Sysmex Vietnam Co., Ltd
Tel +84 02(8) 3997 9400 Fax +84 02(8) 3997 9405
www.sysmex.com.vn

Sysmex Vietnam Co., Ltd (Hanoi Branch)
Tel +84 02(4) 3776-7020 Fax +84 02(4) 3776 7022
www.sysmex.com.vn

Sysmex Australia Pty Ltd
Tel +61 (2) 9016-3040
www.sysmex.com.au

Small. Simple. Smart.

The XQ-320 is Sysmex's latest automated 3-part differential haematology analyser. It has been developed to offer a wide range of new features combined with the proven track record of its predecessors. And with its reliable performance, it will support the laboratory day in and day out for years to come.



- SMALL**
- XQ-320 is one of Sysmex's smallest analyser that offers a truly compact solution which helps laboratories conserve valuable workspace
 - Small aspiration volume of approximately 16 µL



- SIMPLE**
- Huge 10.4" LCD color touch screen
 - User interface harmonized across other Sysmex hematology solution (XN-L series & XN-series)
 - No daily maintenance required

- SMART**
- Smarter specimen flagging messages aligned with Sysmex Flagship Haematology systems: XN & XN-L
 - Patient data storage of up to 500,000 patient records with histogram
 - Throughput of up to 70 samples per hour
 - For user convenience – up to 5 USB ports are available and conveniently placed

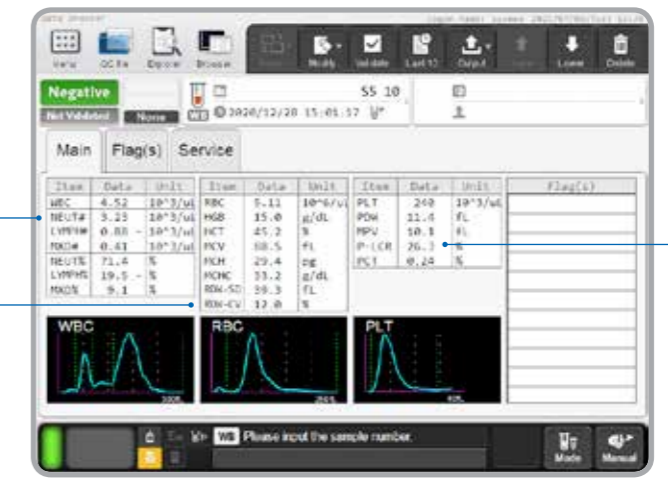


But Powerful...

Screening for Inflammation
Distinct Neutrophil population provides clinical data useful for better patient management

Screening for Anaemia
Both RDW-SD and RDW-CV combined with MCV can set criteria for differentiation of iron deficiency anemia & beta thalassemia.¹

Screening for cause of Thrombocytopenia
PDW, P-LCR and MPV have sufficient sensitivity and specificity in the diagnosis of immune thrombocytopenia.²



Accurate & Reliable Results

- Compact size but still packs a powerful punch – the XQ-320 offers a total of 20 parameters in both whole blood or pre-diluted mode, to offer information with superior clinical utility
- Smarter specimen flagging system for easier, faster interpretation
- Accurate and reliable results for better patient management

References

1. T.P.S.A. Discriminant Functions In Distinguishing Beta Thalassemia Trait and Iron Deficiency Anaemia: The value of the RDW-SD. The Internet Journal of Haematology. Volume 7 Number 2.
2. Kaito K, Otsubo H, Usui N, Yoshida M, Tanno J, Kurihara E, et al. Platelet size deviation width, platelet large cell ratio, and mean platelet volume have sufficient sensitivity and specificity in the diagnosis of immune thrombocytopenia. Br J Haematol. 2005;128(5):698-702.



Improved Lab Management

- New Quality Control security feature which complies with ISO 22870
- Satisfying the requirements for better QC and data management